

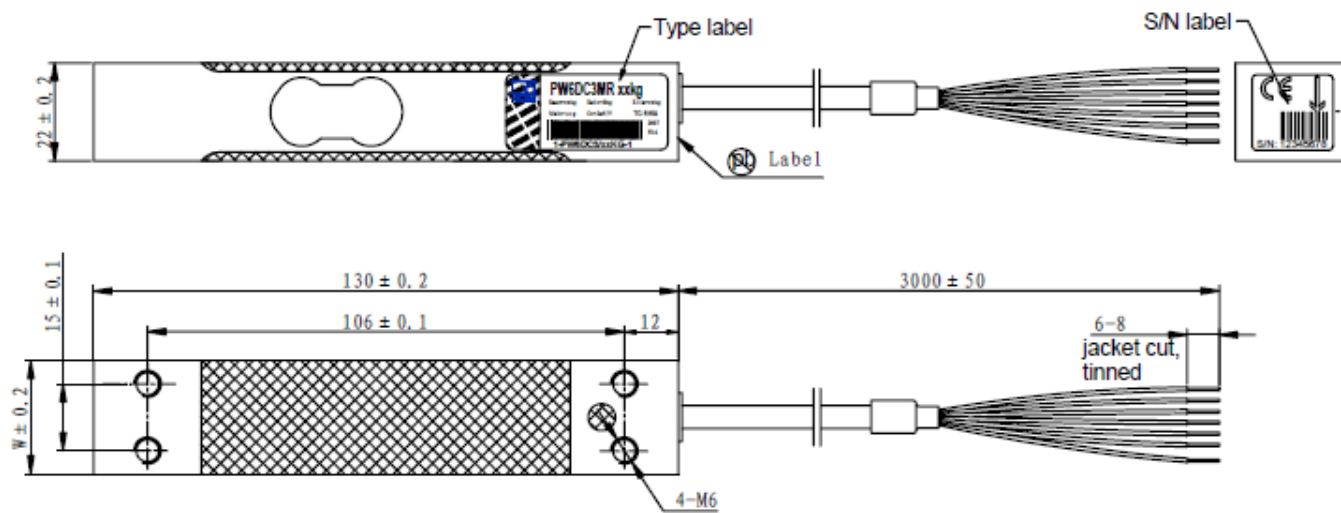
1. 1-PW6DC3/xxKGD-1 Technical data:

技术参数 (Technical data)	单位 (Unit)	1-PW6DC3/xxKGD-1						
精确度等级 (OIML R60)		C3MR						
额定载荷 E _{max} (Max. capacity)	kg	3	5	10	15	20	30	40
最小检定分度值 (V _{min})	g	0.2	0.5	1	1	2	2	5
温度对零点影响 (TC Zero)	% of Cn/10K	±0.0093	±0.0140	±0.0140	±0.0093	±0.0140	±0.0093	±0.0175
灵敏度 (Sensitivity)	mV/V	2.0						
灵敏度误差 (Sensitivity tolerance)	mV/V	±0.20						
温度对灵敏度影响 (TC Span) +20℃~+40℃: -10℃~+20℃:	% of Cn/10K	±0.0175 ±0.0117						
非线性误差 (Non-linearity)	% of Cn	±0.0150						
滞后误差 (Hysteresis error)	% of Cn	±0.0150						
蠕变 (Creep) (30min)	% of Cn	±0.0166						
蠕变恢复 (MDLR)	% of Cn	±0.0166						
秤盘面积 (Max. platform size)	mm	300×300						
四角误差 (Eccentric error)	% of Cn	±0.0233						
零点平衡 (Zero balance)	mV/V	0±0.06						
输入电阻 (Input resistance)	Ω	380±38						
输出电阻 (Output resistance)	Ω	380±38						
参考电压 (Uref)	V	5						
工作电压范围 (Bu)	V	1...15						
绝缘电阻 (Insulation resistance)	GΩ@100V	>2						
额定温度范围 Nominal temperature rang	℃	-10~+40						
工作温度范围 Service temperature range	℃	-10~+50						
存储温度范围 Storage temperature range	℃	-25~+70						
安全承载 (Safe load limit)	% of E _{max}	150						
极限承载 (Breaking load limit)	% of E _{max}	300						
最大载荷下变形量 (Deflection at Max. capacity), approx.	mm	<0.5						
重量 (Weight approx.)	kg	0.25						
材料 (Material)		Aluminum						
保护等级 (IP)		IP65						
应变片要求 Strain gage requirement		Modco/PEEK						

2. 1-PW6DC3/xxKGD-1 Part Number Description:

Part Number	Description	Detailed description
1-PW6DC3/3KGD-1	PW6DC3MR/3kg-3000RG	PW6D, C3MR,3000mm 6W cable W/O plug,ground, Modco
1-PW6DC3/5KGD-1	PW6DC3MR/5kg-3000RG	PW6D, C3MR,3000mm 6W cable W/O plug,ground, Modco
1-PW6DC3/10KGD-1	PW6DC3MR/10kg-3000RG	PW6D, C3MR,3000mm 6W cable W/O plug,ground, Modco
1-PW6DC3/15KGD-1	PW6DC3MR/15kg-3000RG	PW6D, C3MR,3000mm 6W cable W/O plug,ground, Modco
1-PW6DC3/20KGD-1	PW6DC3MR/20kg-3000RG	PW6D, C3MR,3000mm 6W cable W/O plug,ground, Modco
1-PW6DC3/30KGD-1	PW6DC3MR/30kg-3000RG	PW6D, C3MR,3000mm 6W cable W/O plug,ground, Modco
1-PW6DC3/40KGD-1	PW6DC3MR/40kg-3000RG	PW6D, C3MR,3000mm 6W cable W/O plug,ground, Modco

3. 1-PW6DC3/xxKGD-1 Mounting dimension:



Capacity(kg)	3	5	10	15	20	30	40
W(mm)	25.4	25.4	25.4	25.4	25.4	25.4	30

Cable:

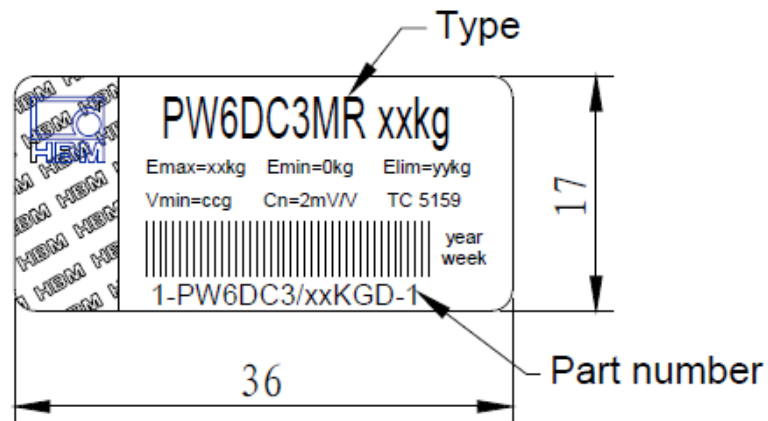
Shielded 6-core round cable(AWG24) with PVC-jacket

Wiring code:

Signal+:	white
Signal - :	red
Excitation voltage -:	black
Excitation voltage + :	blue
Sensing lead+:	green
Sensing lead -:	grey
Shield:	Yellow, connected to load cell

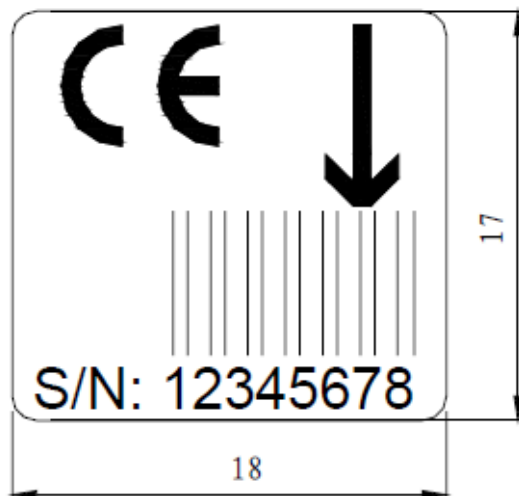
4. Label

4.1 Type label

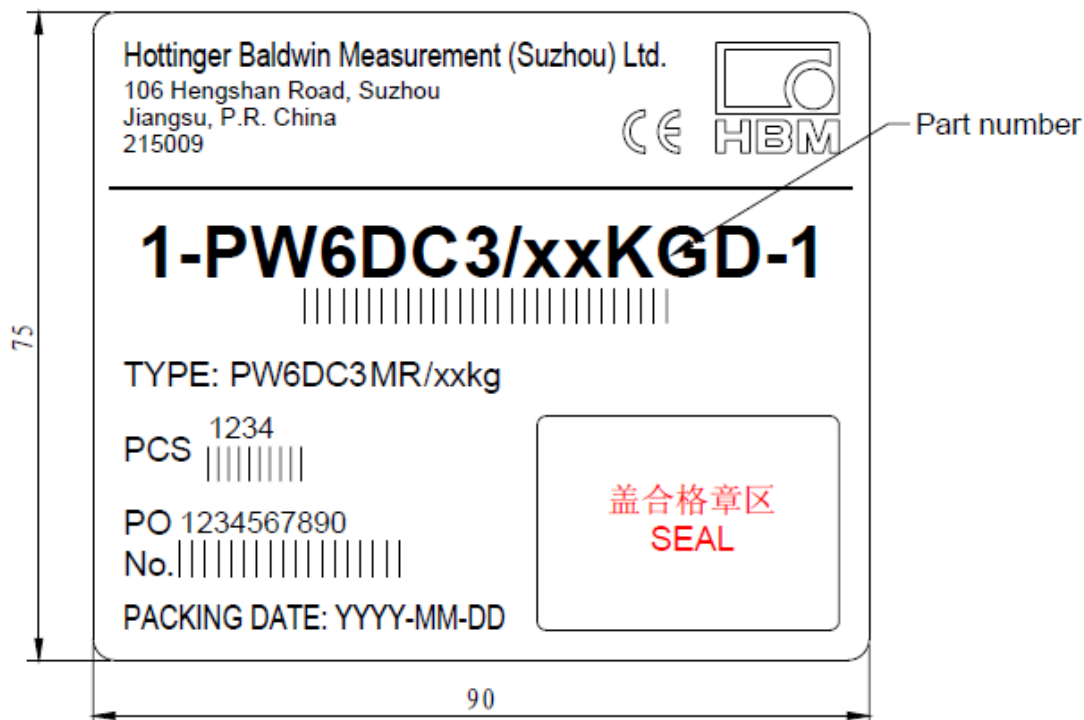


Part Number	xx	yy	cc
1-PW6DC3/3KGD-1	3	4.5	0.2
1-PW6DC3/5KGD-1	5	7.5	0.5
1-PW6DC3/10KGD-1	10	15	1
1-PW6DC3/15KGD-1	15	22.5	1
1-PW6DC3/20KGD-1	20	30	2
1-PW6DC3/30KGD-1	30	45	2
1-PW6DC3/40KGD-1	40	60	5

4.2 S/N Label



4.3 Out package Label



P/N	PO NO.	Type	yyyy-mm-dd
1-PW6DC3/3KGD-1	Purchase order number	PW6DC3MR/3kg	Packing dae (year-month-day)
1-PW6DC3/5KGD-1	Purchase order number	PW6DC3MR/5kg	
1-PW6DC3/10KGD-1	Purchase order number	PW6DC3MR/10kg	
1-PW6DC3/15KGD-1	Purchase order number	PW6DC3MR/15kg	
1-PW6DC3/20KGD-1	Purchase order number	PW6DC3MR/20kg	
1-PW6DC3/30KGD-1	Purchase order number	PW6DC3MR/30kg	
1-PW6DC3/40KGD-1	Purchase order number	PW6DC3MR/40kg	

5. Packing

Quantity: per package 10 pcs.

