

PW2DC3 - 7,2...72kg

Célula de carga Single Point



Libracom
Inteligência em Processos Industriais

DATA SHEET

1. 1-PW2DC3/xxKG-1 Technical data:

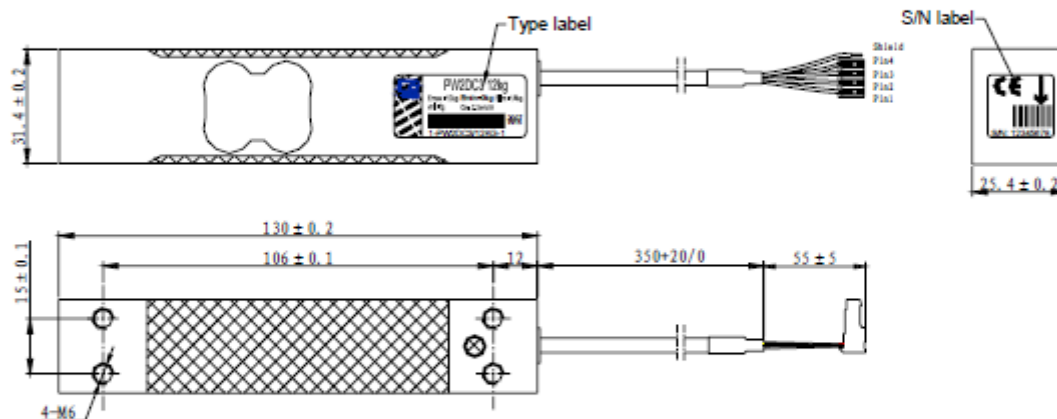
技术参数 (Technical data)	单位 (Unit)	1-PW2DC3/xxKG-1				
精确度等级 (OIML R60)		C3				
额定载荷 Emax (Max. capacity)	kg	7.2	12	18	36	72
最小检定分度值 (vmin)	g	1	2	5	10	20
温度对零点影响 (TC Zero)	% of Cn/10K	±0.0194	±0.0233	±0.0389	±0.0389	±0.0389
灵敏度 (Sensitivity)	mV/V	2.0				
灵敏度误差 (Sensitivity tolerance)	mV/V	±0.2				
温度对灵敏度影响 (TC Span) +20℃~+40℃: -10℃~+20℃:	% of Cn/10K	±0.0175 ±0.0117				
非线性误差 (Non-linearity)	% of Cn	±0.0166				
滞后误差 (Hysteresis error)	% of Cn	±0.0166				
蠕变 (30mins) (Creep)	% of Cn	±0.0245				
蠕变恢复 (30mins) (MDLR)	% of Cn	±0.0166				
秤盘面积 (Max. platform size)	mm	380×380				
四角误差 (Eccentric error)	% of Cn	±0.0233				
零点平衡 (Zero balance)	mV/V	0±0.10				
输入电阻 (Input resistance)	Ω	380±38				
输出电阻 (Output resistance)	Ω	380±38				
参考电压 (Uref)	V	5				
工作电压范围 (Bu)	V	1...15				
绝缘电阻 (Insulation resistance)	GΩ (100V)	>2				
额定温度范围 Nominal temperature rang	℃	-10~+40				
工作温度范围 Service temperature range	℃	-10~+50				
存储温度范围 Storage temperature range	℃	-25~+70				
安全承载 (Safe load limit)	% of Emax	150				
极限承载 (Breaking load limit)	% of Emax	300				
最大载荷下变形量 (Deflection at Max. capacity), approx.	mm	<0.5				
重量 (Weight approx.)	kg	0.25				
材料 (Material)		Aluminum				
保护等级 (IP)		IP67				
应变片要求 Strain gage requirement		Modco/PEEK				



2. 1-PW2DC3/xxKG-1 Part Number Description:

Part Number	Description	Detailed description
1-PW2DC3/7.2KG-1	PW2DC3/7.2kg-350R1GJ	PW2D,C3,350mm 4W cable with plug,ground,2.0mV/V,Modco
1-PW2DC3/12KG-1	PW2DC3/12kg-350R1GJ	PW2D,C3,350mm 4W cable with plug,ground,2.0mV/V,Modco
1-PW2DC3/18KG-1	PW2DC3/18kg-350R1GJ	PW2D,C3,350mm 4W cable with plug,ground,2.0mV/V,Modco
1-PW2DC3/36KG-1	PW2DC3/36kg-350R1GJ	PW2D,C3,350mm 4W cable with plug,ground,2.0mV/V,Modco
1-PW2DC3/72KG-1	PW2DC3/72kg-350R1GJ	PW2D,C3,350mm 4W cable with plug,ground,2.0mV/V,Modco

3. 1-PW2DC3/xxKG-1 Mounting dimension:



Cable:

Shielded 4-core round cable(AWG26) with PVC-jacket

Wiring code:

Pin1 : Excitation voltage + : blue
 Pin2 : Signal+ : white
 Pin3 : Signal - : red
 Pin4 : Excitation voltage - : black
 Shield: Yellow, connected to load cell

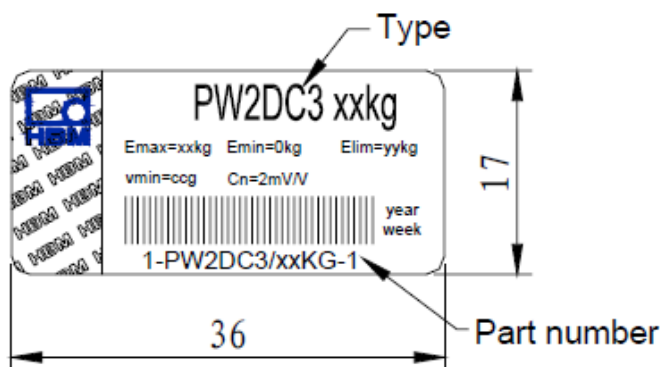
Connector: CE 100F26-4(Pancon)

Mounting:

Max. capacity ≤ 36kg: M8-8.8 screws with cylindrical screw, tightening torque 8N • m
 Max. capacity = 72kg: M8-10.9 screws with cylindrical screw, tightening torque 10N • m

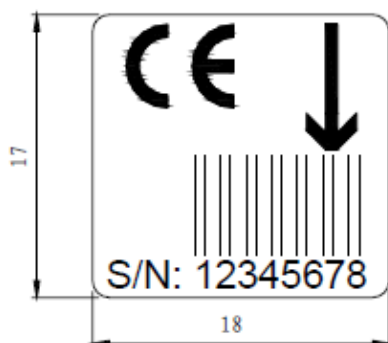
4. Label:

4.1 Type label



Part Number	xx	yy	cc
1-PW2DC3/7.2KG-1	7.2	10.8	1
1-PW2DC3/12KG-1	12	18	2
1-PW2DC3/18KG-1	18	27	5
1-PW2DC3/36KG-1	36	54	10
1-PW2DC3/72KG-1	72	108	20

4.2 S/N Label



4.3 Out package Label



Order P/N	PO NO.	Type	yyyy-mm-dd
1-PW2DC3/7.2KG-1	Purchase order number	PW2DC3/7.2kg	Packing date (year-month-day)
1-PW2DC3/12KG-1	Purchase order number	PW2DC3/12kg	
1-PW2DC3/18KG-1	Purchase order number	PW2DC3/18kg	
1-PW2DC3/36KG-1	Purchase order number	PW2DC3/36kg	
1-PW2DC3/72KG-1	Purchase order number	PW2DC3/72kg	

5. Packing

Quantity: per package 20 pcs.

Note: all packs must be filled with full quantity!